



**HOW YOU CAN**  
**SECURE A FULFILLING BUSINESS IN CHILDCARE**



**Little Bloomers**  
**CHILDCARE CENTRE**

## FOUNDATION

WHY LITTLE BLOOMERS?

## SYSTEM

THE BUSINESS & SYSTEM

## INDUSTRY

WHY CHILDCARE? AND  
WHY NOW?

## OPTIONS

FRANCHISING OR START UP

## MONEY

FEEES AND INVESTMENT  
AMOUNT

## SIGN ME UP!

STEPS TO PROCEED

# WHAT WE ARE COVERING TODAY

## HIGHLIGHTS



# FOUNDATION

## WHY LITTLE BLOOMERS?

- **REPUTABLE DAYCARE WITH OVER 9 YEARS OF SUCCESS IN THE INDUSTRY**
- **ENJOYABLE PLAY-BASED DAYCARE FOR CHILDREN**
- **BE PART OF AN INDUSTRY THAT MAKES A DIFFERENCE WHILE CREATING A PROFITABLE BUSINESS**



# LITTLE BLOOMERS WAS BORN!

**OUR 1ST LOCATION- DOWNTOWN BRAMPTON**

- **OPEN SINCE 2017**
- **LICENSED CAPACITY OF 49 CHILDREN**
- **8 STAFF**
- **CWELCC CENTRE**
- **SUBSIDIZED CARE**

## Hanover Location



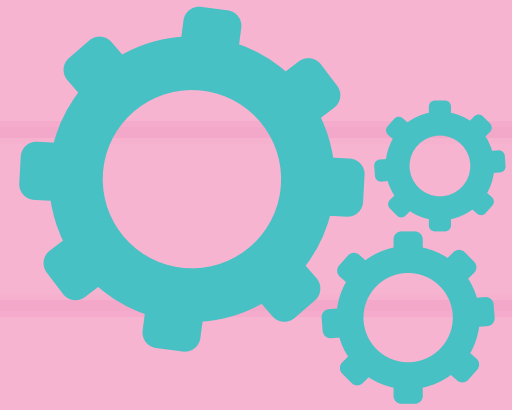
**NOW:**

**LOOK HOW FAR WE'VE GROWN**

- **PROVIDING QUALITY CARE TO OVER 180 FAMILIES**
- **PROVIDING EMPLOYMENT TO OVER 35 STAFF**
- **SERVICING 3 COMMUNITIES**

## Port Elgin Location





# SYSTEM

**SATISFIED CUSTOMERS OVER MULTIPLE LOCATIONS = GOOD SYSTEM**  
What makes a good daycare?

- Ensure we have good rules and regulations that comply with Ministry of Education requirements, Health and Safety, Fire Code, Building code, Human Resources and Financial Record keeping
- They include: Policies and Procedures, Record-keeping forms, scheduling system, efficient platforms for time tracking, billing, children's daily reporting, and employee training

# INDUSTRY

## WHY CHILDCARE AND WHY NOW?

- Current Economy requires both Parents to work
- In demand- there will always be a need for childcare
- A government focused and supported industry
- Wide selection of qualified candidates available- recent graduates
- New Express Entry immigration stream for Educators (NOC42202)



# FRANCHISING OPTION

## THE BENEFITS OF FRANCHISING

- Everything you need for a fully functioning Daycare business. Support from start to finish
- Whether retrofit or commercial build-out, we know what to do
- We know ideal design layouts, appropriate room sizes, what spaces should be included and the appropriate fixtures and furnishings
- We help you to be in compliance with a variety of different regulatory authorities such as: Health, Fire, Building, Ministry of Education, Local Municipality and any local inclusive resources
- On-going support in every aspect of your business: -enrollment, -hiring, -advertising & marketing, -parent communication and satisfaction, -curriculum & staff training, -business efficiency and record keeping



# START UP OPTION

## NEW DAYCARE SUPPORT

- Everything you need for a fully functioning Daycare business. Support from start to finish
- Whether retrofit or commercial build-out, we know what to do
- We know ideal design layouts, appropriate room sizes, what spaces should be included and the appropriate fixtures and furnishings
- We help you to be in compliance with a variety of different regulatory authorities such as: Health, Fire, Building, Ministry of Education, Local Municipality and any local inclusive resources
- Your own brand
- You manage your business your way



# DIFFERENCE

## FRANCHISE

ON-GOING SUPPORT AND UPDATES

### INCLUSIONS

- SITE SELECTION SUPPORT
- DESIGN SUPPORT
- POLICIES & PROCEDURES (AS UPDATED)
- FORMS (AS UPDATED)
- EMPLOYEE HANDBOOK (ANNUAL UPDATES)
- EMPLOYEE CONTRACTS (ANNUAL UPDATES)
- TRAINING MODULES (AS UPDATED)
- BRAND IDENTITY
- WEBSITE (OWN TAB) AND MARKETING

## START UP

SUPPORT UNTIL DAYCARE IS OPEN

- SITE SELECTION SUPPORT
- DESIGN SUPPORT
- POLICIES & PROCEDURES
- FORMS
- EMPLOYEE HANDBOOK
- EMPLOYEE CONTRACTS
- TRAINING MODULES

# FEES

	FRANCHISE	START UP
<b>INITIAL BUSINESS FEE</b>	<b>\$45.000 INITIAL 5 YR FEE</b> ( <b>\$25.000 ON SIGNING. \$5000/M X 4MONTHS</b> )	<b>\$75.000</b> ( <b>\$35.000 ON SIGNING.</b> <b>\$10.000/M X 4MONTHS</b> )
<b>MONTHLY</b>	<b>6% ON-GOING ROYALTY FEE</b> ( <b>GROSS REVENUE</b> )	<b>AS NEEDED BASIS AT</b> <b>ADDITIONAL HOURLY</b> <b>RATE</b>
<b>MONTHLY</b>	<b>1% MARKETING FEE</b> ( <b>MONTHLY GROSS REVENUE</b> )	<b>N/A</b>

# INVESTMENT REQUIRED BASED ON OPTION AND SIZE

- The range of 3000 sq ft for approximately 80 children @\$200 sq ft = \$600,000
- + Start-up or Franchise Fee (\$45,000 or \$75,000)
- + \$180,000 operational and professional fee cushion for the first year
- -\$156,000 20% downpayment (Your Funds)
- = Loan Amount (\$699,000 or \$669,000)



# CWELCC START UP GRANT

- \$10/day for all Canadians from 2026
- Who qualifies? Not for profit corporation
- Helps with costs of interior retrofitting of a new location
- Approx. \$6000 per space created



# **SIGN ME UP**

**1. EMAIL IDENTIFICATION AND CONTACT INFORMATION.**

**2. REVIEW FRANCHISE PACKAGE (14 DAYS).**

**OR**

**START UP AGREEMENT (NO TIME LIMIT).**

**3. SIGN & PAY INITIAL FEES (LAWYER & BUSINESS FEE).**

**4. APPLY FOR FINANCING.**

**5. SITE SELECTION – PURCHASE OR LEASE.**

**6. OPEN A CORPORATION AND BEGIN LICENSE APPLICATION.**

**7. DESIGN & INTERIOR RENOVATIONS BEGIN.**

**8. PURCHASING—FIXTURES, FURNISHINGS AND MATERIALS.**

**9. INSPECTIONS AND STAFFING.**

**10. ENROLLING— GRAND OPENING!**

**EXPECTED TIMELINE: FOR IS 6-12 MONTHS  
(DEPENDING ON HOW QUICKLY SITE CAN BE ACQUIRED AND RENOVATIONS  
COMPLETED)**

The background is a white grid pattern. The text is centered and surrounded by various hand-drawn shapes in different colors: pink, yellow, blue, green, and magenta. These shapes include abstract blobs, lines, and patterns, creating a vibrant and artistic border around the central text.

**THANK YOU**  
**VERY MUCH**